



GitiUtility 668^{V1}

GitiUtility 668V1 is a highly popular commercial light truck pattern featuring durability and mileage, focusing on enhancing driving efficiency and experience.

Rim size:

 16"

Aspect Ratio:

 80

Max. Load:

 975-1500 / tire



EQUAL FORCE CASING DESIGN

Improves overall handling, lowers irregular wear, and increases tire life.



advanztech Extra Durable Technology

Combination of tread compound, pattern design, and overall casing structure significantly improves tire durability and rigidity.

	Size	Speed Rating	Load Index
16	6.00R13 LT	N	98/93
	6.50R16 LT	N	107/102
	7.00R16 LT	N	115/110
	7.50R16 LT	N	122/118

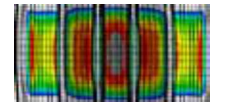


DURABILITY AND MILEAGE

- Double-layer high-strength steel belt and high-strength nylon cap ply:
Enhanced tread rigidity, eliminating deformation



- FEA construction:
Optimizes and uniformly distributes contact pressure, Prevent irregular wear and improve wear performance



- Strong bead design:
Improved bead durability, delivering longer service life



- Applied high modulus and low-shrinkage polyester ply:
Strong casing, delivering good load carrying performance for longer service life



- Shallow sipe design:
Good wet grip

